

SUSPENSION SYSTEM.

- 82** Front Suspension System
- 83** Rear Suspension System
- 84** Suspension Electronic Simulator
- 85** Air Suspension System
- 86** Hydraulic Suspension System
- 87** Cut away in Shock Absorber
- 88** Cut away in Shock Absorber with Spring



INTRODUCTION

Educational device that trains students on the front suspension system of vehicles. The suspension system is one of the very important topics of which technicians are mostly concerned about during the maintenance of a vehicle.

SCOPE OF DELIVERY

- A Cut away in the front suspension system of the vehicle.
- The device is mounted on a 4 wheel painted metal chassis that is supported also with wood.
- The lab unit is mounted on 4 wheels with brakes for fitting during tests.
- Colored and detailed diagrams showing the suspension system and its components.

SUPPLIED WITH THE UNIT

Operation Manual in both Arabic and English Language with a full and detailed explanation of the device and how to operate it.

ACCESSORIES

- AUT-15102 Cover for the equipment
- AUT-15103 Touch Screen
- AUT-15104 Screen Holder fitted on the device
- AUT-15108 Fault diagnosis equipment
- AUT-15109 Labels for the Laboratory
- AUT-15110 Basic Tool Kit
- AUT-15111 Advanced Tool Kit

GENERAL FEATURES OF THE UNIT

- The device is a front chassis of a vehicle to which all suspension system components are being fitted like; shock absorbers, bearings and other components.
- The device is being designed in a manner that shows the internal construction of all parts and their operation.
- The sections are being colored for easily preparation of the components.
- The device is being fitted to a metal chassis that is electrostatically painted and mounted on 4 wheels supported with wood for easy mobility inside the laboratory.
- The device is supplied with manual brakes of wheels for fitting the unit during the pressure test of the suspension system.

Dimensions & Weight

100 Cm x 70 Cm x 100 Cm

150 Kg

Electric Supply

1 Phase , 220 Volts, 50 Hertz

3 Phase , 380 Volts , 50 Hz

E - CONTENT

AUT 14107-101 E-Content for Front Suspension System



INTRODUCTION

Educational device that trains students on the rear suspension system of vehicles. The suspension system is one of the very important topics of which technicians are mostly concerned about during the maintenance of vehicles of vehicles.

GENERAL FEATURES OF THE UNIT

- The device is a rear chassis of a vehicle to which all suspension system components are being fitted like; shock absorbers, bearings and other components.
- The device is being designed in a manner that shows the internal construction of all parts and their operation.
- The sections are being colored for easily preparation of the components.
- The device is being fitted to a metal chassis that is electrostatically painted and mounted on 4 wheels, also supported with wood for easily mobility inside the laboratory.
- The device is supplied with manual brakes of wheels for fitting the unit during the pressure test of the suspension system.

E - CONTENT

AUT 14107-201 E-Content for Rear Suspension System

ACCESSORIES

- AUT-15102 Cover for the equipment
- AUT-15103 Touch Screen
- AUT-15104 Screen Holder fitted on the device
- AUT-15108 Fault diagnosis equipment
- AUT-15109 Labels for the Laboratory
- AUT-15110 Basic Tool Kit
- AUT-15111 Advanced Tool Kit

SCOPE OF DELIVERY

- A Cut away in the rear suspension system of the vehicle.
- The device is mounted on a 4 wheel painted metal chassis that is supported also with wood.
- The Lab unit that is mounted on 4 wheels with brakes for fitting during tests.
- Colored and detailed diagrams showing the suspension system and its components

SUPPLIED WITH THE UNIT

Operation Manual in both Arabic and English Language with a full and detailed explanation of the device and how to operate it.

Dimensions & Weight

100 Cm x 70 Cm x 100 Cm

150 Kg



INTRODUCTION

Educational device that simulates a complete vehicle with both rear and front suspension systems and also supported with a chair for giving the student a real driving experience. The suspension system is one of the very important topics of which technicians are mostly concerned about in the maintenance of vehicles.

SUPPLIED WITH THE UNIT

Operation Manual in both Arabic and English Language with a full and detailed explanation of the device and how to operate it.

SCOPE OF DELIVERY

- Complete simulation for the vehicle with its front and rear suspension system.
- A program that is loaded to a touch screen for selection of different scenarios for the suspension to operate upon.
- Air lifting system to simulate the different road configurations to load the device on.

ACCESSORIES

- AUT-15102 Cover for the equipment
- AUT-15109 Labels for the Laboratory
- AUT-15110 Basic Tool Kit
- AUT-15111 Advanced Tool Kit

GENERAL FEATURES OF THE UNIT

- The device is provided with a panel through which the student can run the wheels at certain speeds.
- The whole system is driven on a system of air cylinders that could be controlled to simulate the movement of the vehicle or one of the wheels on a bump or a hill from certain side for the student to observe the operation of the suspension system.
- The student can control each wheel at a time in both speed and height.
- The device is supported with an electronic touch screen with a simulation program for some patterns of bumps and holes that any encounters on the road.
- The student can select the proper state for test and the system consequently puts the vehicle in that position which enables the student to observe the operation of the suspension system till he drives the vehicle to its normal state.
- The student can control the time which the vehicle takes to get up and down of the test position and controls each wheel at a time even if not being in the test position.

Dimensions & Weight

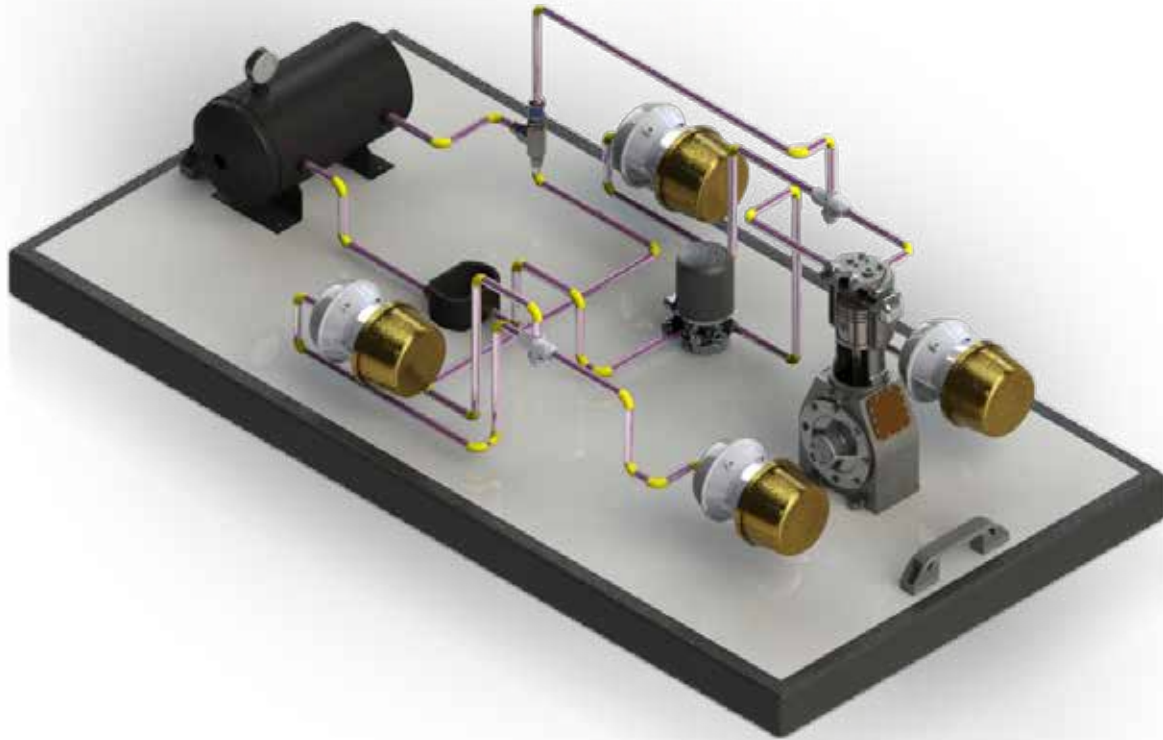
200 Cm x 00 Cm x 150 Cm

500 Kg

Electric Supply

1 Phase , 220 Volts , 50 Hertz

3 Phase , 380 Volts , 50 Hertz



INTRODUCTION Educational device representing a Complete Cut away of all parts of air suspension system that enables the students to get to know all of the system components and gives the ability to test them. The air suspension system is almost always used in heavy equipment. The suspension system is one of the very important topics of which technicians are mostly concerned about during the maintenance of vehicles.

GENERAL FEATURES OF THE UNIT

- The device is a complete cut away in all parts of the air suspension system.
- The device is supplied with detailed diagrams enabling the student to know all the components of the system.
- The sections are being colored for easily preparation of the components.
- The device is being fitted to a chassis that is mounted on 4 wheels for easy mobility.

SCOPE OF DELIVERY

- An air suspension system complete with its all components.
- Colored sections in all parts.
- Detailed diagrams.
- Chassis with 4 wheels for easy mobility.

Dimensions & Weight
120 Cm x 70 Cm x 100 Cm
300 Kg

Electric Supply
1 Phase , 220 Volts, 50 Hertz

SUPPLIED WITH THE UNIT Operation Manual in both Arabic and English Language with a full and detailed explanation of the device and how to operate it.

E - CONTENT AUT 14107-301 E-Content for Air Suspension System

ACCESSORIES	AUT-15102 Cover for the equipment	AUT-15109 Labels for the Laboratory
	AUT-15103 Touch Screen	AUT-15110 Basic Tool Kit
	AUT-15104 Screen Holder fitted on the device	AUT-15111 Advanced Tool Kit
	AUT-15108 Fault diagnosis equipment	



INTRODUCTION

Educational device representing a complete cut away of all parts of a hydraulic suspension system. this enables students to get to know all of the system components and give them the ability to test them. The hydraulic suspension system is almost always used in heavy equipment. The suspension system is one of the very important topics of which technicians are mostly concerned about in the maintenance of vehicles.

SCOPE OF DELIVERY

- A hydraulic suspension system complete with its all components.
- Colored sections in all parts.
- Detailed diagrams.
- Accumulator unit that stores oil inside for the operation of the system
- Chassis with 4 wheels for easy mobility.

SUPPLIED WITH THE UNIT

Operation Manual in both Arabic and English Language with a full and detailed explanation of the device and how to operate it.

ACCESSORIES

- AUT-15102 Cover for the equipment
- AUT-15103 Touch Screen
- AUT-15104 Screen Holder fitted on the device
- AUT-15108 Fault diagnosis equipment

- AUT-15109 Labels for the Laboratory
- AUT-15110 Basic Tool Kit
- AUT-15111 Advanced Tool Kit

GENERAL FEATURES OF THE UNIT

- The device is a complete cut away in all parts of the hydraulic suspension system.
- The device is supplied with detailed diagrams enabling the student to know all the components of the system.
- The sections are being colored for easily preparation of the components.
- The device is being fitted to a chassis that is mounted on 4 wheels.
- The device is supplied with an accumulator unit that stores oil inside for the operation of the system.

Dimensions & Weight

120 Cm x 70 Cm x 100 Cm

300 Kg

Electric Supply

1 Phase , 220 Volts, 50 Hertz

E - CONTENT

AUT 14107-401 E-Content for Hydraulic Suspension System



INTRODUCTION

Educational device that covers many parts in more than one type of shock absorbers.

GENERAL FEATURES OF THE UNIT

- The device has more than one cut away indicating the operation of shock absorbers in the suspension system.
- The device is supplied with detailed diagrams enabling the student to know all the components of the system.
- The sections are being colored for easily preparation of the components.
- The device is being fitted to a Painted metal chassis that is supported also with a plastic handle.

SUPPLIED WITH THE UNIT

Operation Manual in both Arabic and English Language with a full and detailed explanation of the device and how to operate it.

ACCESSORIES

- AUT-15102 Cover for the equipment
- AUT-15109 Labels for the Laboratory
- AUT-15110 Basic Tool Kit
- AUT-15111 Advanced Tool Kit

SCOPE OF DELIVERY

- Cut away in different types of shock absorbers of suspension systems of vehicles.
- Colored sections in all parts.
- Detailed diagrams.
- Painted metal chassis for the device to be fitted to, supported also with a plastic handle.

Dimensions & Weight

80 Cm x 60 Cm x 60 Cm

20 Kg

Electric Supply

1 Phase , 220 Volts, 50 Hertz



INTRODUCTION

Educational device that covers many parts in more than one type of shock absorbers with springs.

GENERAL FEATURES OF THE UNIT

- The device has more than one cut away indicating the operation of shock absorbers in the suspension system.
- The device is supplied with detailed diagrams enabling the student to know all the components of the system.
- The sections are being colored for easily preparation of the components.
- The device is being fitted to a painted metal chassis that is supported also with a plastic handle.
- The device is supported with a spring for each shock absorber.

Dimensions & Weight

80 Cm x 60 Cm x 60 Cm

20 Kg

SCOPE OF DELIVERY

- Cut away in different types of shock absorbers of suspension systems of vehicles.
- Colored sections in all parts.
- Detailed diagrams.
- Painted metal chassis for the device to be fitted to, supported also with a plastic handle.
- Spring along with each absorber.

Electric Supply

1 Phase , 220 Volts, 50 Hertz

ACCESSORIES

AUT-15102	Cover for the equipment
AUT-15109	Labels for the Laboratory
AUT-15110	Basic Tool Kit
AUT-15111	Advanced Tool Kit

SUPPLIED WITH THE UNIT

Operation Manual in both Arabic and English Language with a full and detailed explanation of the device and how to operate it.